

# Technical data sheet



## Product features

### Cooling cabinet 700 l GN 2/1, stainless steel, right door

<b>Model</b>	<b>SAP Code</b>	00014288
--------------	-----------------	----------



- GN / EN size in device: GN 2/1
- Minimum device temperature [°C]: -2
- Maximum device temperature [°C]: 8
- Insulation thickness [mm]: 60
- Control type: Digital
- Interior lighting: No
- Opening of device: Hinges on the right
- Automatic defrost: Yes
- Annual energy consumption [kWh]: 986

<b>SAP Code</b>	00014288	<b>Gross Volume [m3]</b>	1.279
<b>Net Width [mm]</b>	693	<b>Net Volume [m3]</b>	1.149
<b>Net Depth [mm]</b>	826	<b>Number of GN / EN</b>	3
<b>Net Height [mm]</b>	2008	<b>GN / EN size in device</b>	GN 2/1
<b>Net Weight [kg]</b>	110.00	<b>Minimum device temperature [°C]</b>	-2
<b>Power electric [kW]</b>	0.227	<b>Maximum device temperature [°C]</b>	8
<b>Loading</b>	230 V / 1N - 50 Hz	<b>Refrigerant</b>	R290
<b>Energy class</b>	D	<b>Climate class</b>	4

# Technical data sheet



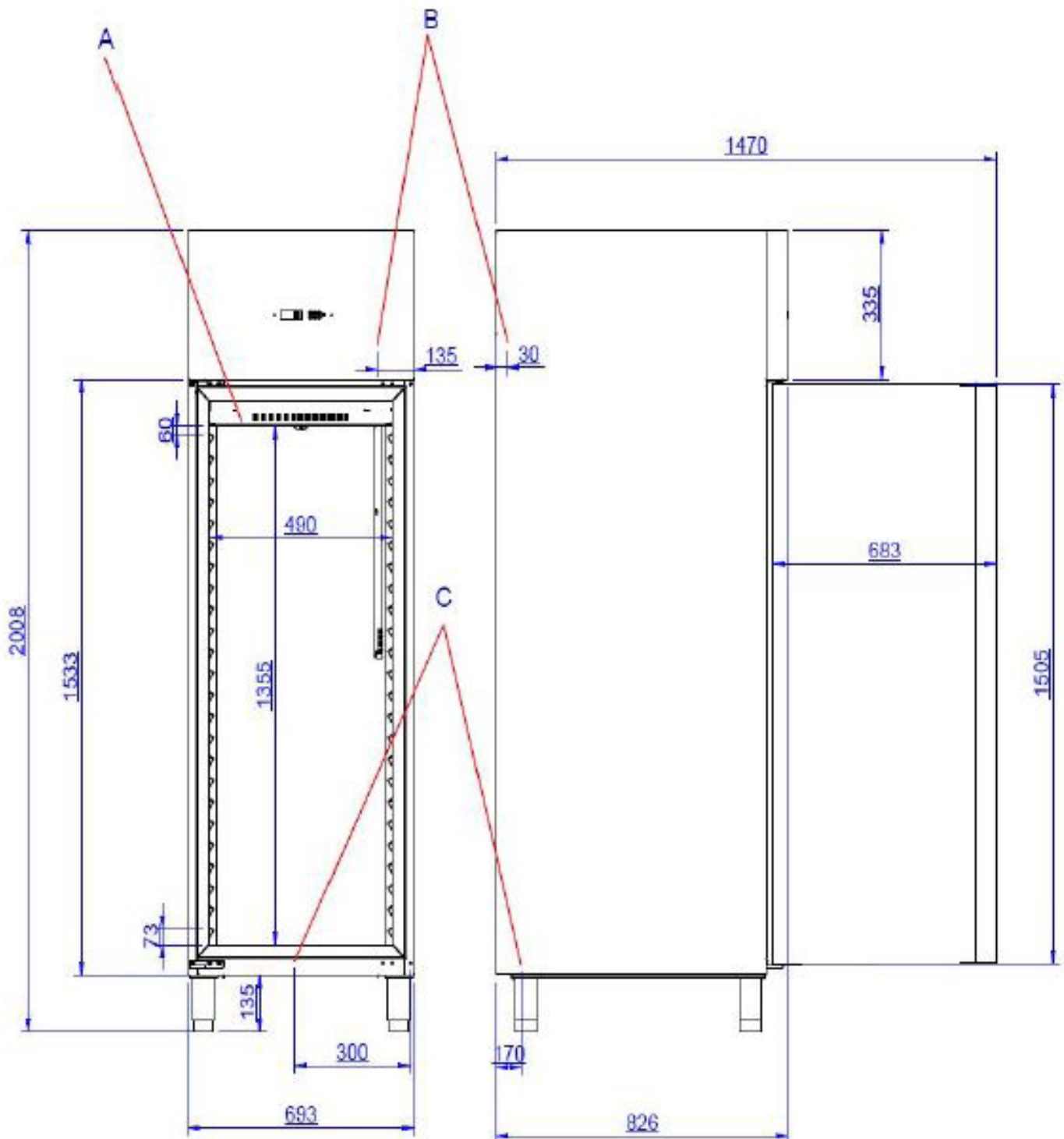
Technical drawing

Cooling cabinet 700 l GN 2/1, stainless steel, right door

Model

SAP Code

00014288



# Technical data sheet



## Technical parameters

### Cooling cabinet 700 l GN 2/1, stainless steel, right door

**Model**

**SAP Code**

00014288

**1. SAP Code:**

00014288

**2. Net Width [mm]:**

693

**3. Net Depth [mm]:**

826

**4. Net Height [mm]:**

2008

**5. Net Weight [kg]:**

110.00

**6. Gross Width [mm]:**

700

**7. Gross depth [mm]:**

850

**8. Gross Height [mm]:**

2150

**9. Gross Weight [kg]:**

149.00

**10. Device type:**

Electric unit

**11. Power electric [kW]:**

0.227

**12. Loading:**

230 V / 1N - 50 Hz

**13. Energy class:**

D

**14. Refrigerant:**

R290

**15. Cooling type:**

Dinamic

**16. Material:**

Stainless steel

**17. Min ambient temperature [°C]:**

10

**18. Max ambient temperature [°C]:**

43

**19. Device properties 2:**

Cooling

**20. GN / EN size in device:**

GN 2/1

**21. Number of GN / EN:**

3

**22. Gross Volume [m3]:**

1.279

**23. Net Volume [m3]:**

1.149

**24. Standard equipment for device:**

3 plastic-coated grids GN 2/1

**25. Adjustable feet:**

Yes

**26. Insulation thickness [mm]:**

60

**27. Opening of device:**

Hinges on the right

**28. Number of doors:**

1

# Technical data sheet



Technical parameters

Cooling cabinet 700 l GN 2/1, stainless steel, right door

Model

SAP Code

00014288

**29. Unit:**

Yes

**35. Automatic defrost:**

Yes

**30. Control type:**

Digital

**36. Thaving cycle:**

Yes

**31. Interior lighting:**

No

**37. Number of grids:**

3

**32. Annual energy consumption [kWh]:**

986

**38. Climate class:**

4

**33. Minimum device temperature [°C]:**

-2

**39. Cross-section of conductors CU [mm<sup>2</sup>]:**

0,5

- Výkon (kW): 2,4-3,3 (230 V)

**34. Maximum device temperature [°C]:**

8